

Sealed LED lighting fixtures
for outdoor applications



KLUŚ – a company with a long tradition, whose core business has always been DESIGN, perceived as conscious design, in which function and product quality create a harmonious whole. We are distinguished by the flexibility of our forms, modularity, and systemic approach, allowing architects, investors, and individual clients to design and select LED lighting solutions tailored to their needs.

LED in-ground and recessed fixtures

HR-MAX	08
HR-SLIM	12

Illumination of facades

HR-OPTI	18
FASKO	22
KIDES	26
KIDES-DUO	27

Step and railing lighting

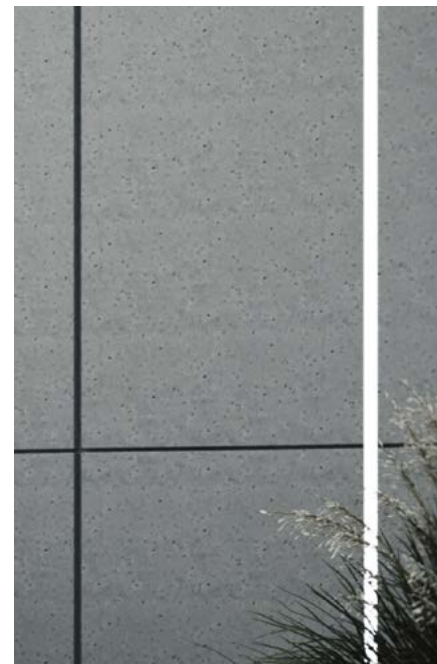
STEP	32
STEPUS	33
POR	34

Hermetic accessories

WIRE CONNECTORS, GLANDS	38
-------------------------	----

Intelligent lighting control

CONTROLLERS	40
-------------	----



LED in-ground and recessed fixtures

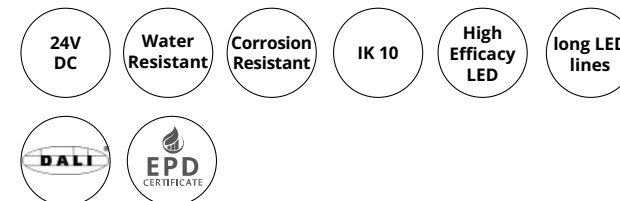
Outdoor lighting, including pedestrian walkways such as sidewalks and driveways, plays a practical role in improving visibility, providing good orientation, and providing a sense of security. Investing in high-quality outdoor LED luminaires that meet high standards for energy efficiency, safety, and durability is crucial to ensuring comfortable and safe use of outdoor spaces for years to come.

In ground lighting

Specialized lighting characterized by reliability in harsh conditions. Key features include resistance to mechanical loads (e.g., pedestrian and vehicle pressure, impacts), high ingress protection, and corrosion resistance, even in high salinity.

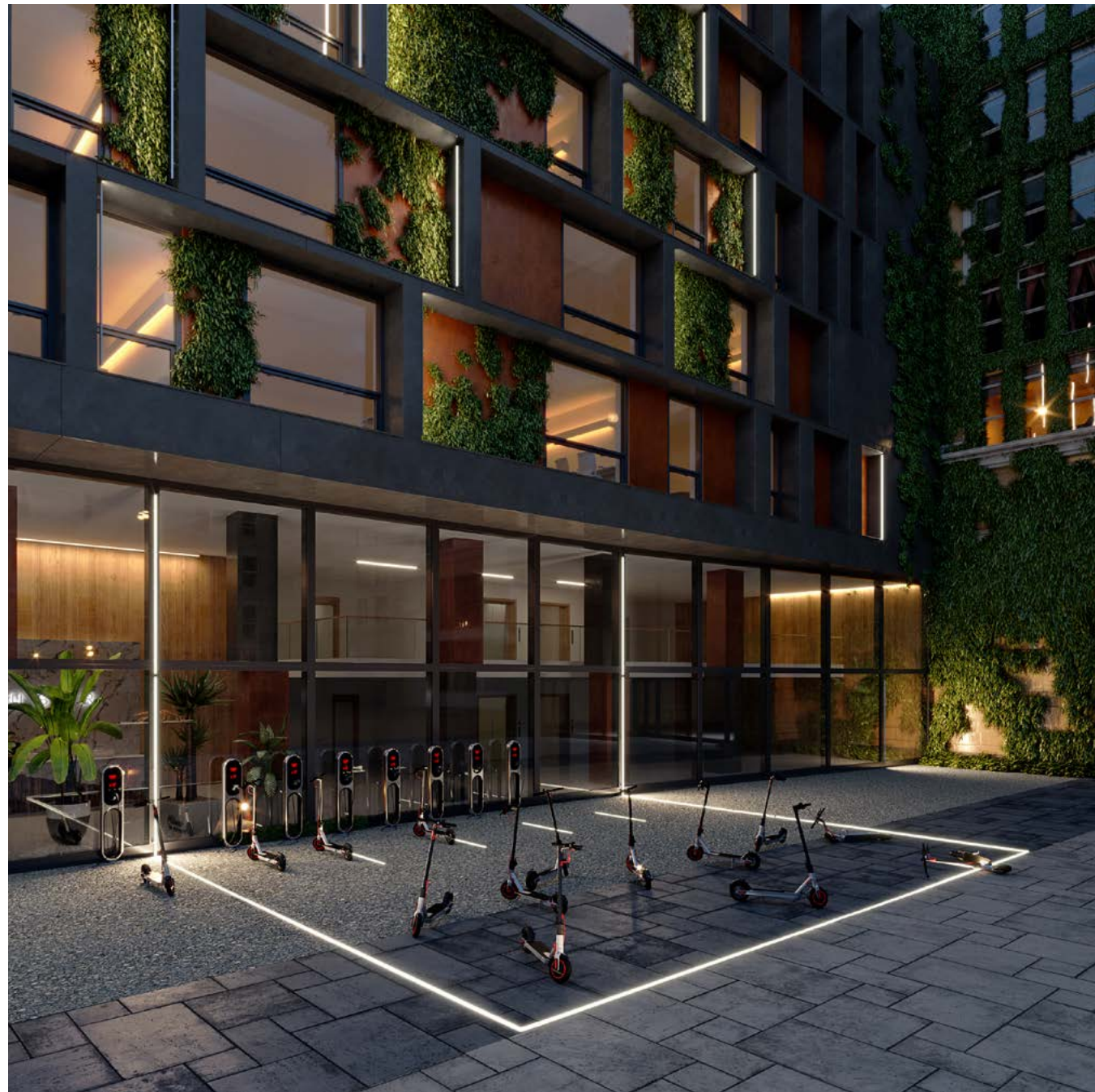
Recessed lighting

Sealed and resistant luminaires with the added advantage of a small footprint, allowing for almost completely discreet integration of light into the ground. Furthermore, it's possible to run a line of light from the floor to the wall, then to the ceiling, or even bend it.



HR-MAX

LED in-ground fixtures



Q House
„Best Architecture Single Residence Poland”
Piotrków Trybunalski, Poland
REFORM ARCHITEKT GROUP

profile: HR-MAX, frosted cover: HR-21
LED: WP-K-50-1210-24V 4.8W



The sturdy luminaire can handle loads up to 2000 kg, making it an ideal solution for driveways and high-traffic areas. The additional profile is IK10 rated (high impact protection) and resistant to shock in saline environments.

The profile width is adapted to the HR-OPTI façade system, allowing for a clear transition of the light lines from the base to the vertical facade.

Unique features of HR-MAX luminaires: angled connections and evenly illuminated angled connections between luminaires.



The luminaire is mounted using technical profiles, which create additional space for concealing cable glands and routing cables. Use circularly insulated wire with an outer diameter of at least 6 mm and a maximum of 9 mm. A hermetic coupler should be used to connect the wires.

CHECK INSTALLATION

Quick installation of the finished, sealed fixture directly into the ground. The use of polyurethane foam simplifies installation of the profile and stabilizes it in the ground.

CHECK INSTALLATION



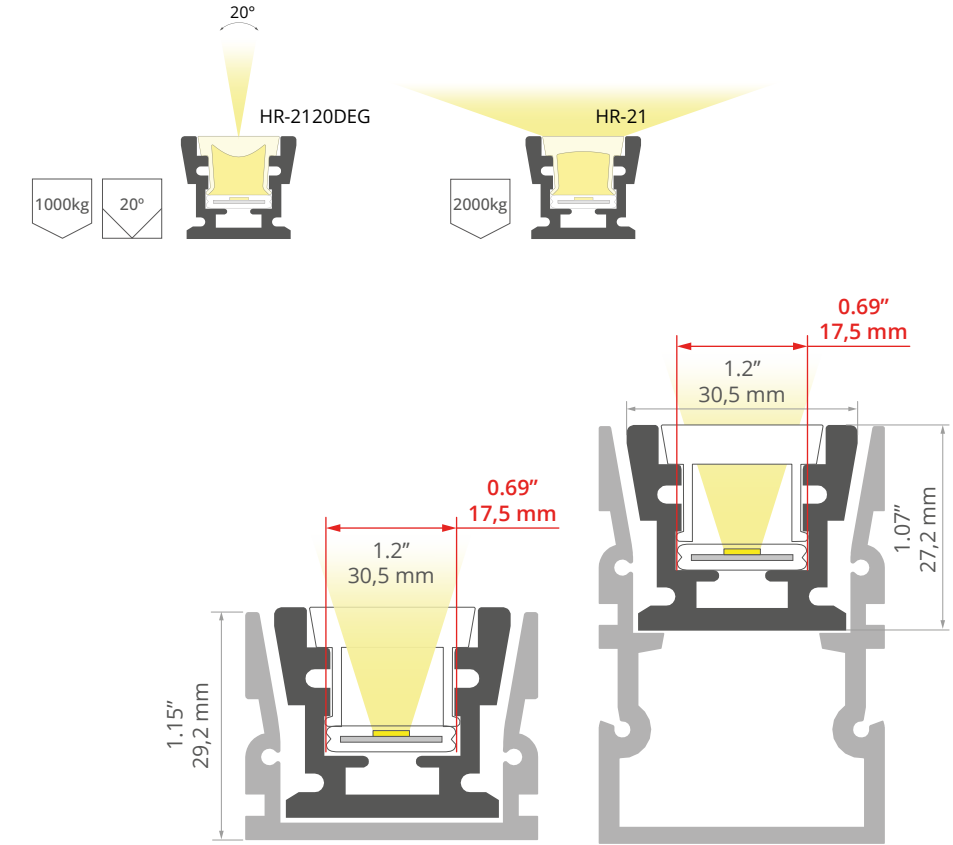
The HR-2120DEG focusing cover allows for a very narrow beam of light - 20°. It can withstand a static load of up to **1000 kg**.

The HR-21 frosted cover perfectly disperses light. It can withstand a static load of up to **2000 kg**.

Material: aluminum
Profile length: **max. 3m**
Possible luminaire IP: **IP 66, 67, 68**
Maximum power of a single LED strip: **15.3 W/m**
LED mounting width: 17.5 mm
Number of LED strips (8 mm wide): 1

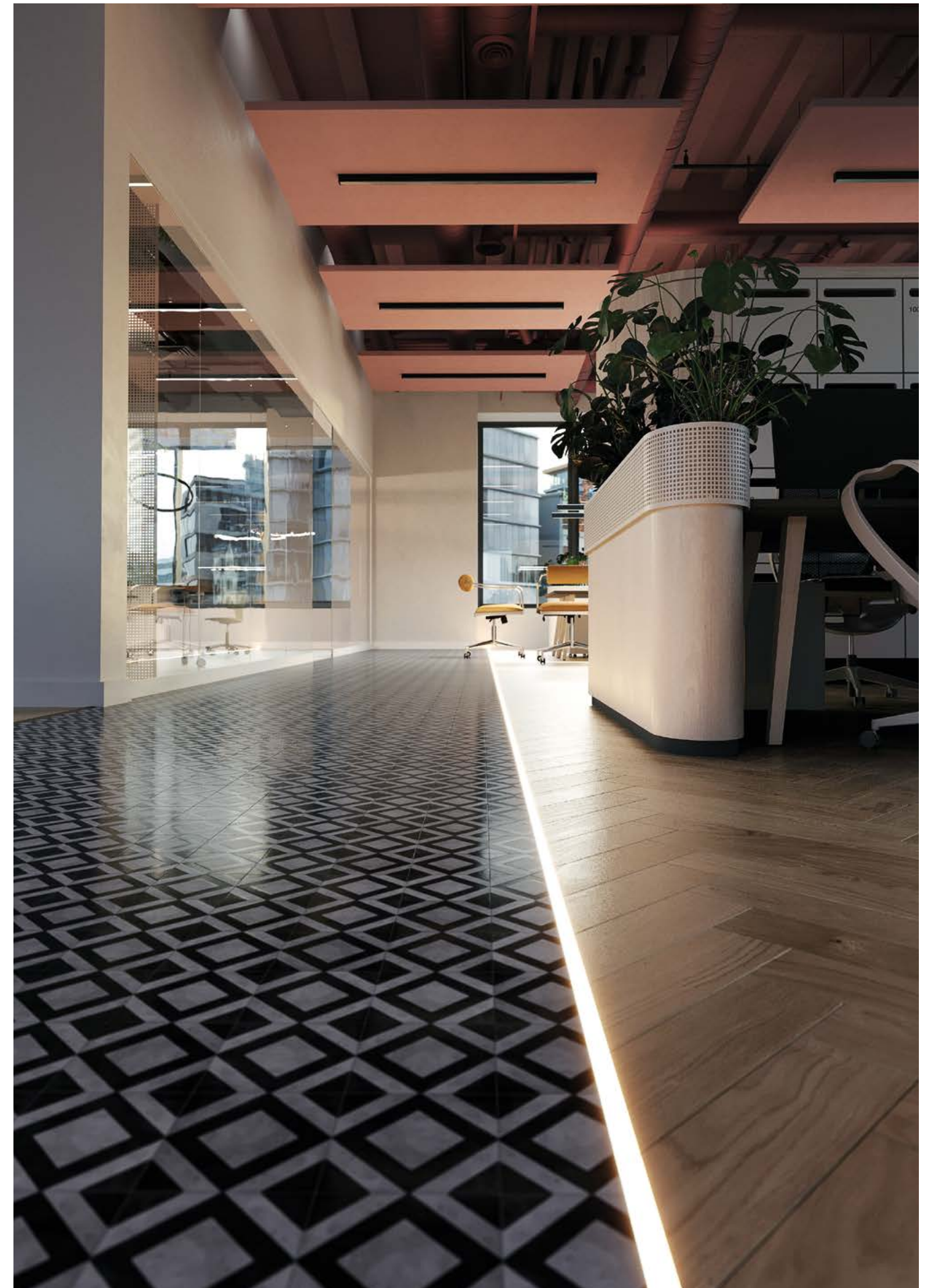
Corrosion resistance in high salinity
IK10 impact protection
Cover is cut to the length of the profile
Cable outlet from the bottom
Possibility of creating a line of light

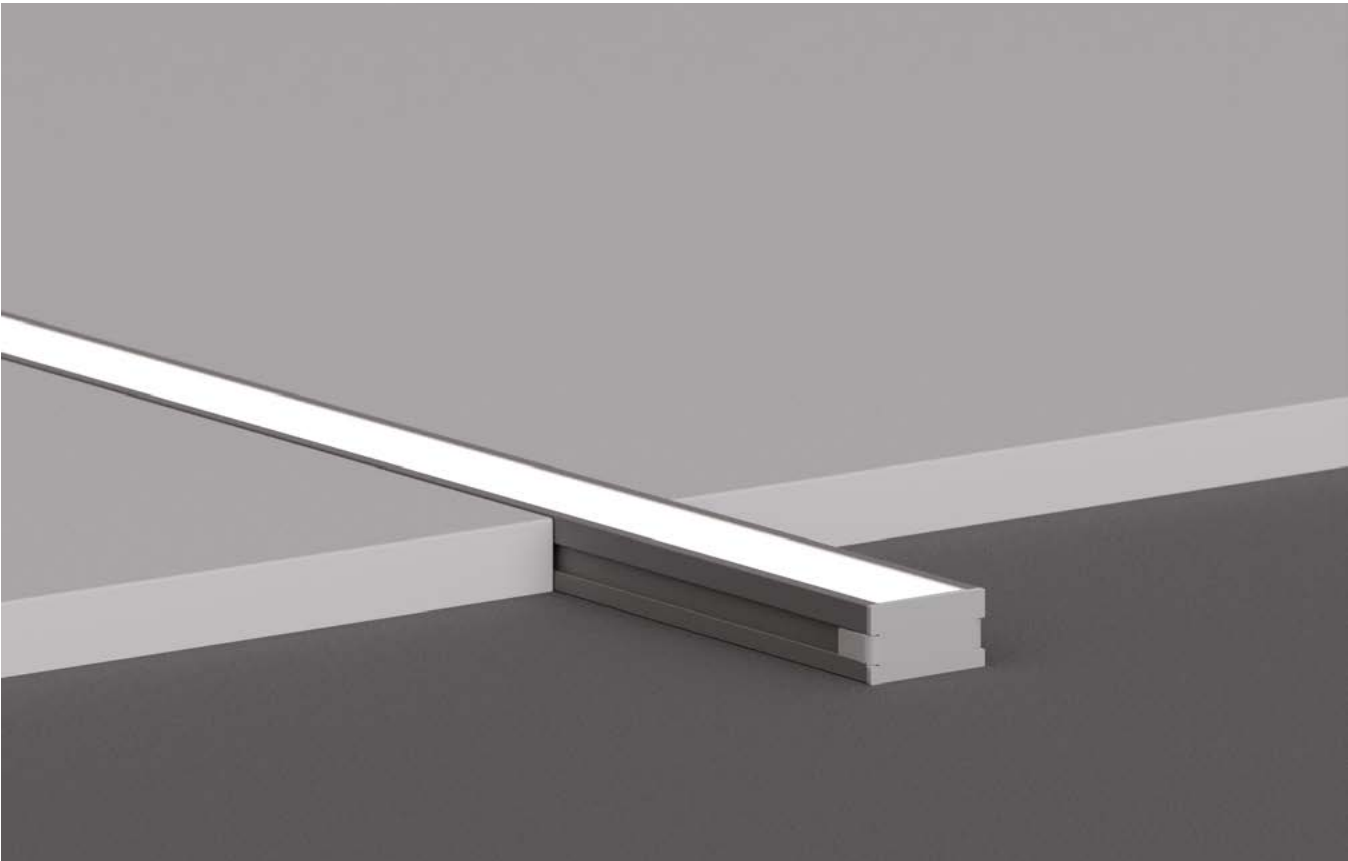
CONFIGURE FIXTURE
FILM HR-MAX



HR-SLIM

Recessed LED fixtures





This profile is ideal for use with ceramic tiles, terracotta, and sintered quartz. The fixture is resistant to high pressure – the maximum load can reach up to 500 kg. Once the cover is installed, it is walkable and scratch- / crack-resistant. It can be easily sealed to IP65 using a dedicated, click-on cover. Achieving IP67 sealing is possible with silicone sealant.

The factory bendable profile allows for the creation of custom lighting arrangements, for example, along arches, around kitchen islands, and so on.

The HR-SLIM profile can factory bent into arcs and circles with a minimum diameter of 1000 mm (arcs illuminating downwards or outwards) or 500 mm (arcs illuminating inwards).



The profile can be mounted in the ground, to the surface, using mounting adhesives or screws.

[CHECK INSTALLATION](#)

No dimming of the light line towards corners or at profile junctions.

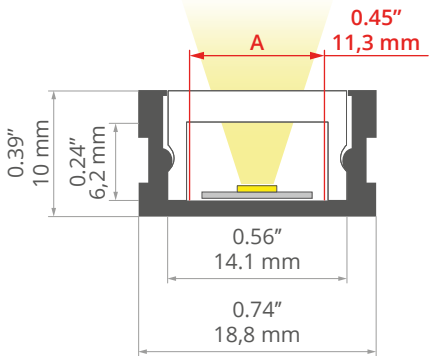
The characteristic „light gate” effect is achieved thanks to the special HR-15 cover, which provides a uniform line of light without visible LED points.

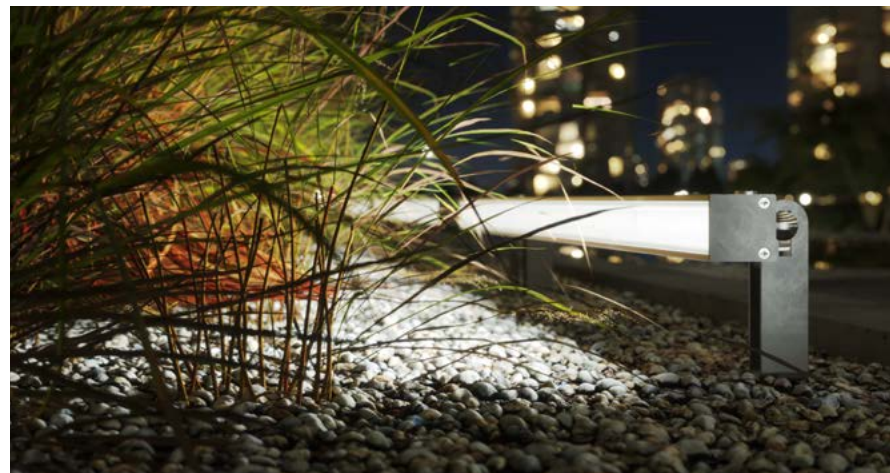


Material: aluminum
Profile length: **max. 3m**
Possible luminaire **IP: 65, 67**
Maximum power of a single LED strip: **19.2 W/m**
LED A strip width: 11.3mm
Number of LED A strips (8mm wide): 1

Can be bent in the light plane
IK8 impact protection
Cover is cut to the length of the profile
Cable outlet from the bottom
Possibility of creating a line of light

[CONFIGURE FIXTURE](#)





Illumination of facades

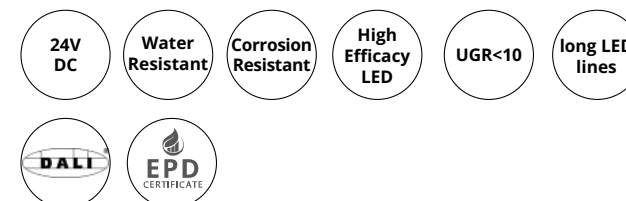
Facade lighting is a key element that defines the character of a building and its surroundings. Appropriately illuminating these surfaces, both as a whole and with attention to the smallest details, directly influences the perception of space, giving it a unique look and atmosphere. Using linear LED lighting combined with simple wall sconces allows for the creation of a comprehensive and personalized façade lighting plan. Linear luminaires can provide general, even illumination, while wall sconces focus attention on key details, resulting in a cohesive and visually engaging design.

Linear LED lighting

Linear lighting is a versatile tool that allows for even distribution of light across large surfaces. Its flexibility allows for subtle accentuation of building contours, highlighting material textures, and even creating dynamic lighting effects. Thanks to their discreet design, linear LED luminaires can be integrated into architecture, becoming virtually invisible during the day, and at night, enlivening facades with soft, diffused light or intense accents. They are ideal for illuminating long, flat walls, emphasizing their height or width.

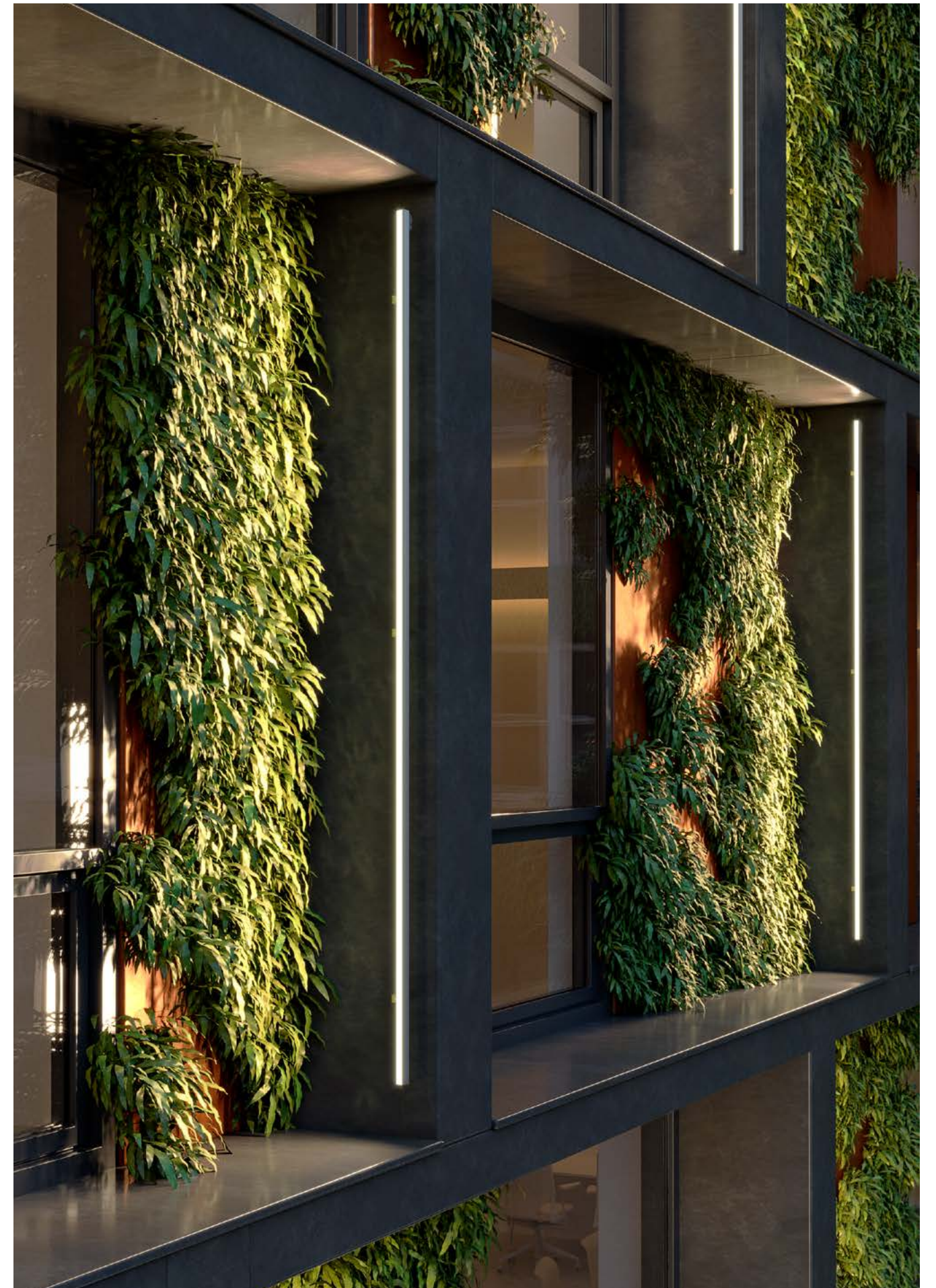
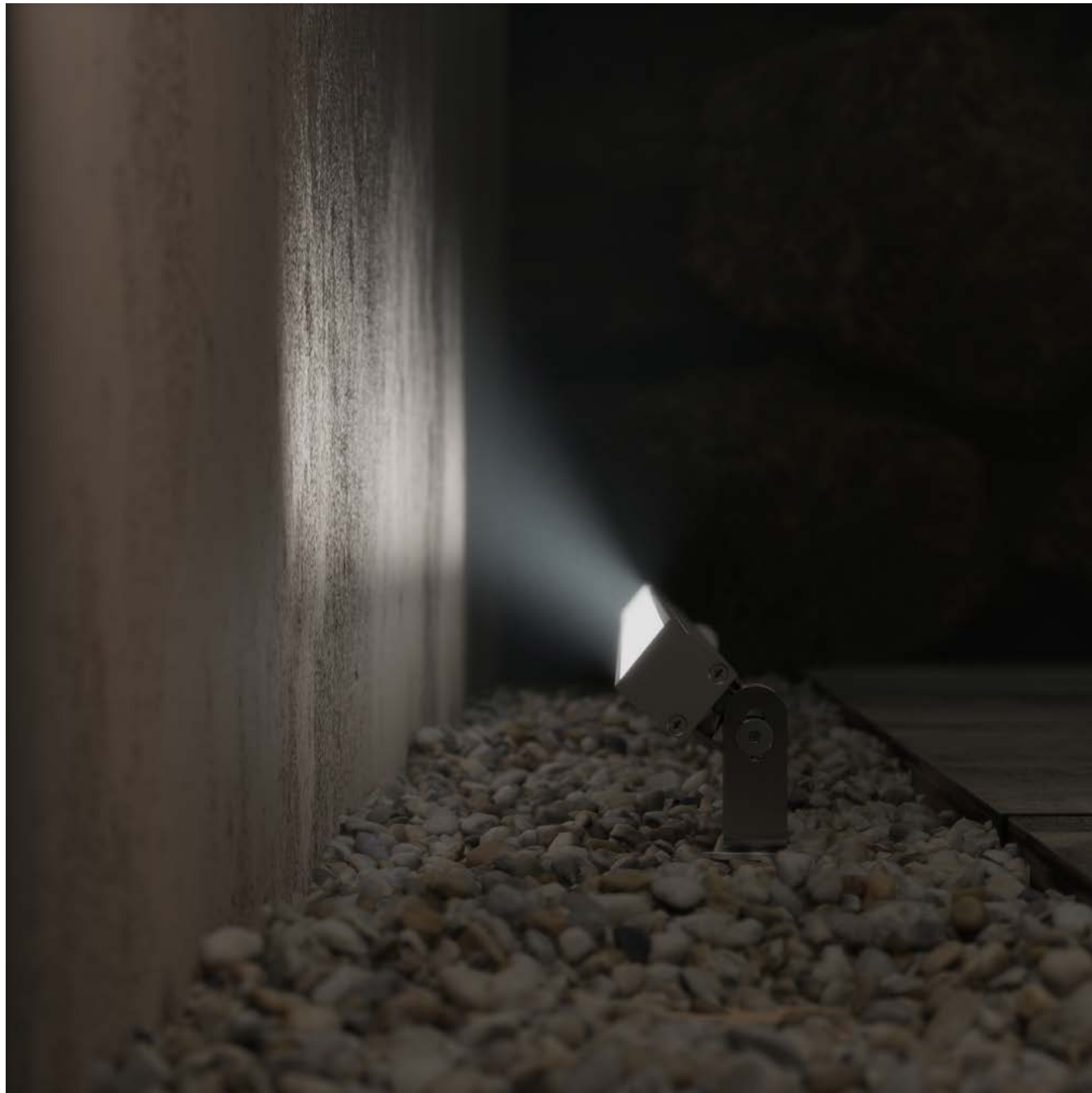
Outdoor wall lamps

Minimalist LED wall lamps are an excellent choice for accentuating selected architectural elements or creating a chiaroscuro effect, adding depth to a façade. Furthermore, they are perfect for highlighting entrances, stairwells, and pedestrian walkways, significantly improving user safety and comfort.



HR-OPTI

Illumination of facades





The HR-OPTI luminaire is a lighting solution primarily used for illuminating building facades and for ground-level lighting. The profile can be sealed to IP68, has an IK10 rating (high impact protection), and is resistant to corrosion in saline environments.

The width of the HR-OPTI profile perfectly matches the HR-MAX ground - mounted luminaire system, allowing you to create a uniform transition of the light line from the ground level to the vertical facade.



For facade lighting, the HR-OPTI is equipped with adjustable stainless steel mounts. These allow for adjustment of the beam angle up to 120°, adjustment of the distance from the mounting surface, and flexible adaptation to uneven facade surfaces.

[CHECK INSTALLATION](#)
[CHECK INSTALLATION LED](#)

The HR-OPTI luminaire can be mounted to the ground using mounting anchors, which also allow for precise and smooth adjustment of the light direction.

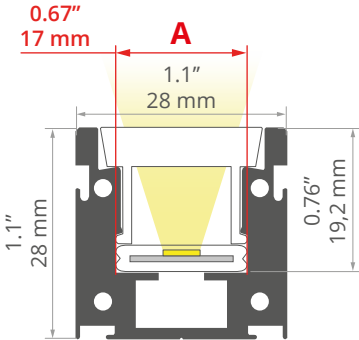
Equipping the luminaire with the HR-21 20°DEG lens cover creates a narrow beam of light with a long throw. This configuration will evenly illuminate the building's façade.



Material: aluminum
Profile length: **max. 3m**
Possible luminaire **IP: 65, 67, 68**
Maximum power of a single LED strip: **15.3 W/m**
LED A strip width: 17 mm
Number of LED A strips (8 mm wide): 1

Corrosion resistance in high salinity
IK10 impact protection
Cover is cut to the length of the profile
Cable outlet from the bottom
Possibility of creating a line of light

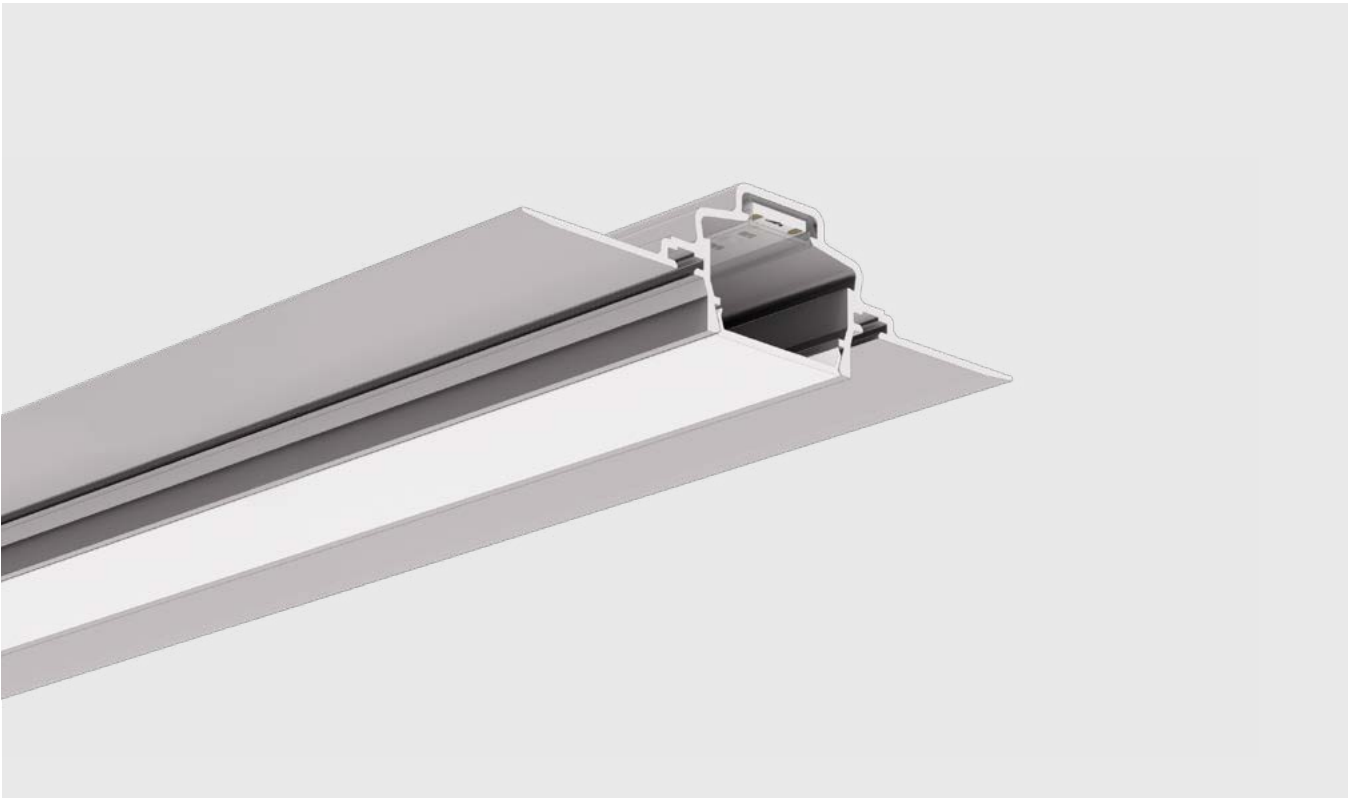
[CONFIGURE FIXTURE](#)
[FILM HR-OPTI](#)



FASKO

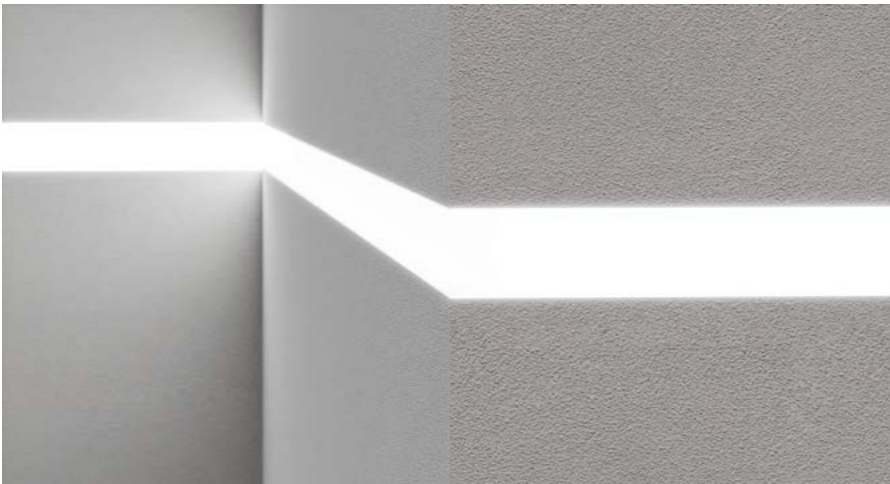
Illumination of facades





A solution designed specifically for architectural lighting of building facades, in both commercial and residential projects. The FASKO profile is characterized by an elegant design, providing clean lines without visible aluminum elements, and powerful illumination.

A key feature of the FASKO system is its dual function. During the day, it can function as a gap in the plaster, known as a facade rustication. After dusk, it becomes a fixture built into the facade.



The profile can be installed in the thermal insulation layer of the building facade using mounting adhesives.

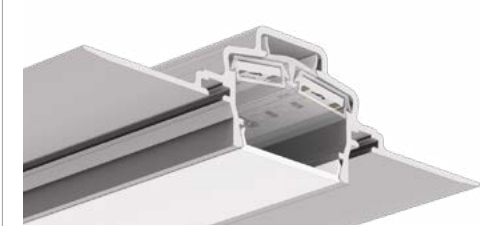
CHECK INSTALLATION



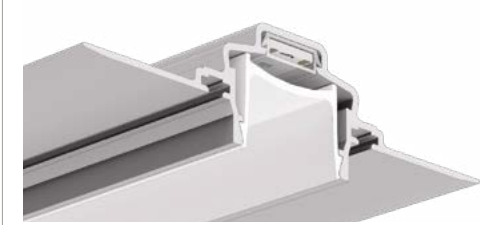
FASKO profiles are compatible with sealed 8K series LED strips, featuring simple „click” installation.



To create a strong line of light, flush with the façade, the luminaire can be fitted with two LED strips and a flat, frosted cover.



The special BONI-22 cover allows you to create rustication with a simultaneous lighting function, integrating light with architecture.



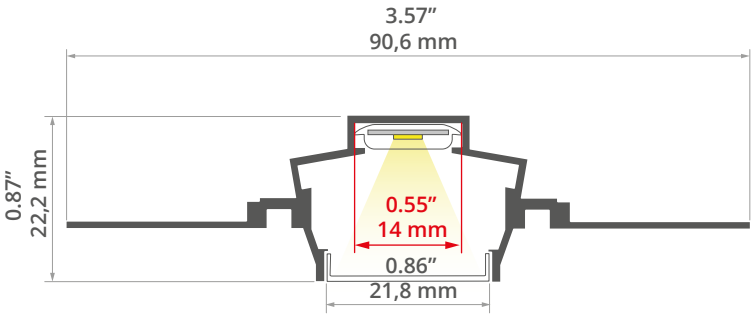
- Material: aluminum
- Profile length: **max. 3m**
- Possible luminaire **IP: 65**
- Maximum power of a single LED strip: **19.2 W/m**
- LED A strip width: 14 mm
- LED B strip width: 28 mm
- Number of LED A strips (8 mm wide): 1
- Number of LED B strips (8 mm wide): 2

Ability to install sealed 8K strips
Easy to connect in series
Line of light flush with the surface
Invisible aluminum elements
Cover is cut to the length of the profile
Line of light can be created

CONFIGURE FIXTURE

FILM FASKO





KIDES, KIDES-DUO
Illumination of facades





A minimalist wall lamp with a simple design, suitable for indoor and outdoor use.

The fixture has an IP54 rating, meaning it is suitable for use in variable weather conditions. A specially designed power supply compartment ensures tightness and safe operation, while also allowing easy access for maintenance.

The KIDES fixture allows for the installation of up to six LED strips, achieving very high luminous efficacy. This configuration extends the fixture's functionality beyond purely decorative applications, enabling it to be used as a functional lighting source, for example, for illuminating passageways or as architectural lighting.

Material: aluminum
Profile length: **max. 3m**
Possible luminaire **IP: 54, 65**
Maximum power of a single LED strip: **24 W/m**
LED A strip width: 49 mm
Number of A LED strips (8 mm wide): 6

Compartment/space for power supply
Cover is cut to the length of the profile
Cable outlet from the bottom
Possibility of creating a line of light

CONFIGURE FIXTURE

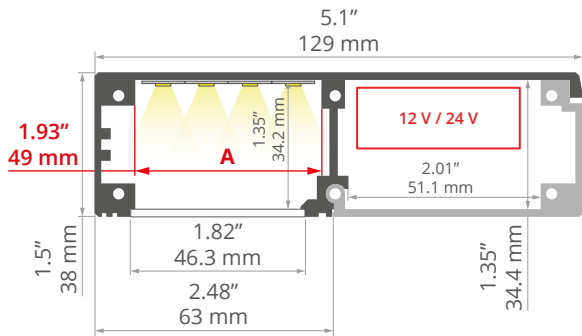
CHECK INSTALLATION

FILM KIDES

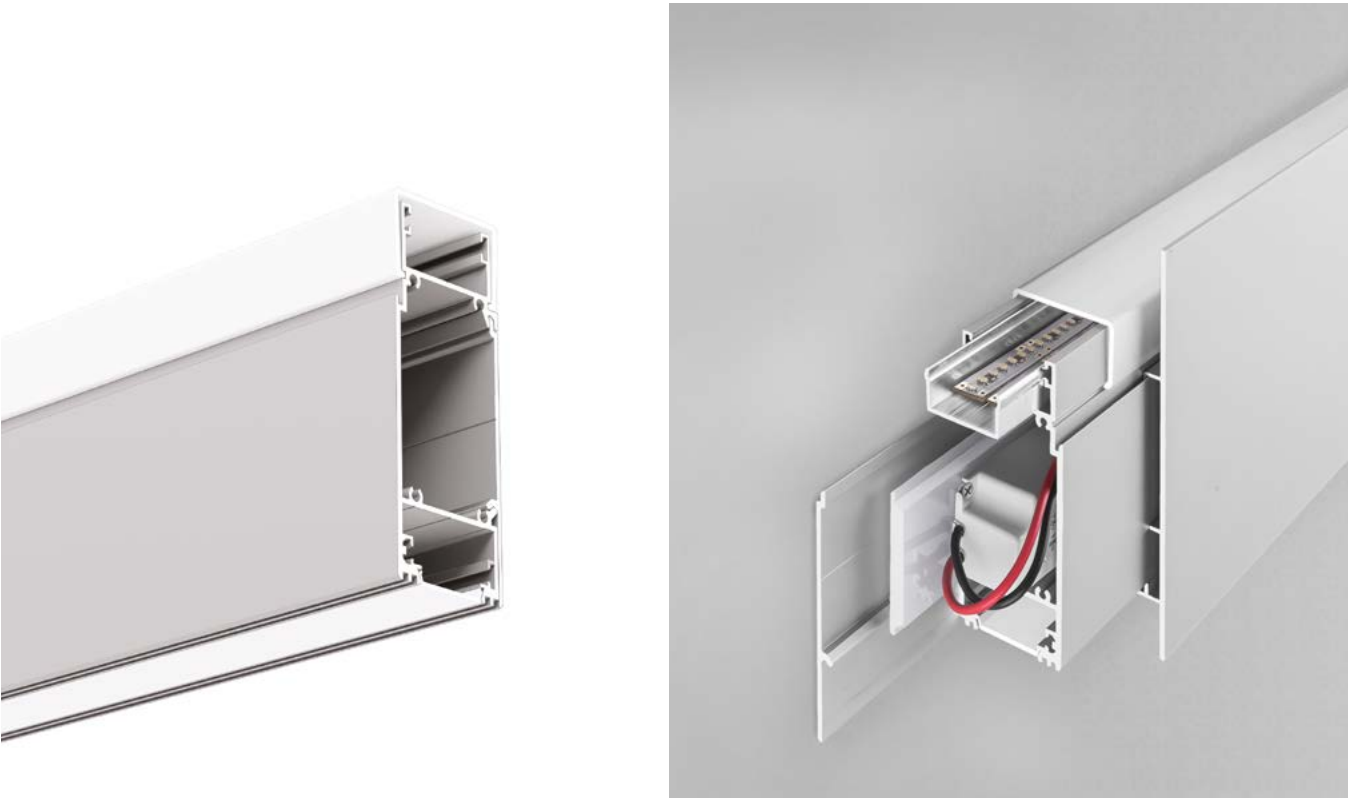
CE

RoHS

UKCA



1:2



A simple wall luminaire designed for both indoor and outdoor installation.

It directs light upwards and downwards, creating attractive lighting effects. The front of the luminaire can be covered with a flat panel, extending its function to a purely decorative light source, emphasizing the minimalist character of the space.

The luminaire has an IP 54 rating, meaning it is suitable for use in variable weather conditions. A specially designed power supply compartment ensures tightness and safety of use, while also allowing easy access for service.

Material: aluminum
Profile length: **max. 3m**
Possible luminaire **IP: 54, 65**
Maximum power of a single LED strip: **24 W/m**
LED A strip width: 49 mm
Number of LED A strips (8 mm wide): 6

Compartment/space for power supply
Cover is cut to the length of the profile
Cable outlet from the bottom
Possibility of creating a line of light

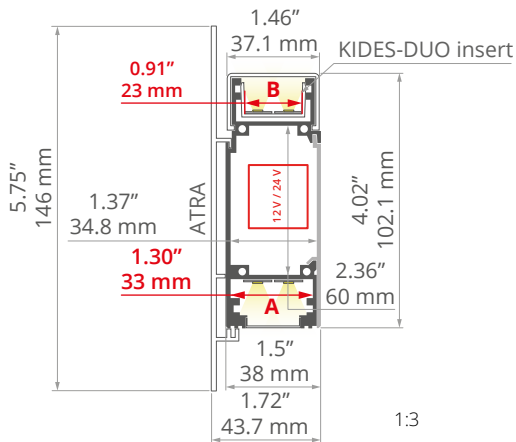
CHECK INSTALLATION

FILM KIDES-DUO

CE

RoHS

UKCA



1:3



Step and railing lighting

There's no doubt that outdoor lighting is exposed to harsh operating conditions, so fixtures must be made of durable materials and offer a high degree of protection against moisture and dust.

Another important aspect of lighting, especially for stairs and handrails, is safety. When installed on the edges of steps, linear fixtures improve their visibility, which is fundamental for safe movement on the stairs and acts as a discreet guide. An alternative solution is to install an LED profile in the handrails. This illuminates a larger area around the stairs, further improving orientation and safety.

Step lighting

When choosing a linear fixture for stair steps, you should pay attention to the combination of material durability, adequate protection against external conditions, safety of use and aesthetic and functional lighting.

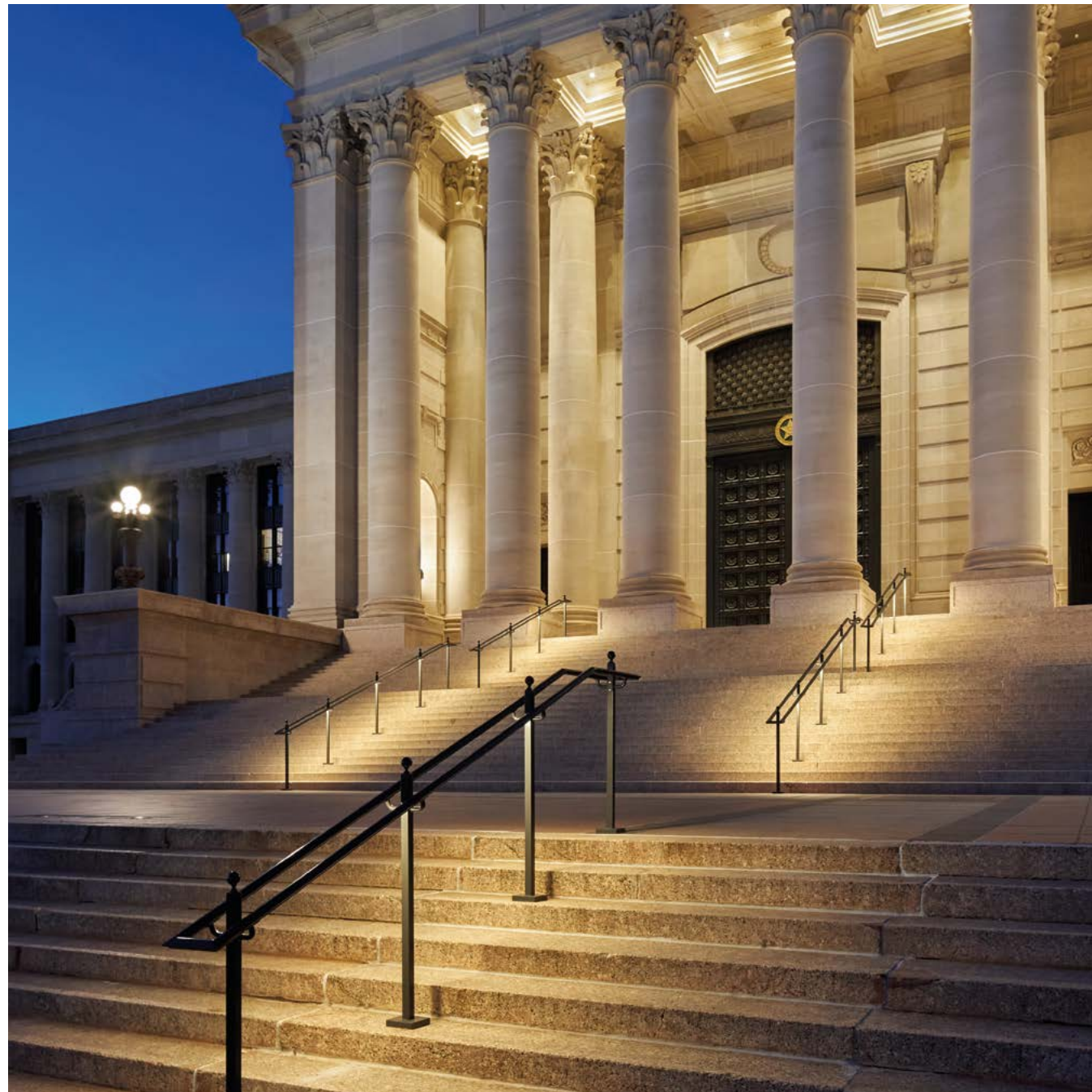
Handrail lighting

Concealed lighting in architecture increasingly encompasses not only ceilings, walls, and floors, but also structural elements such as stair railings. Such fixtures must be characterized, above all, by high watertightness, simple, trouble-free installation, and easy maintenance.



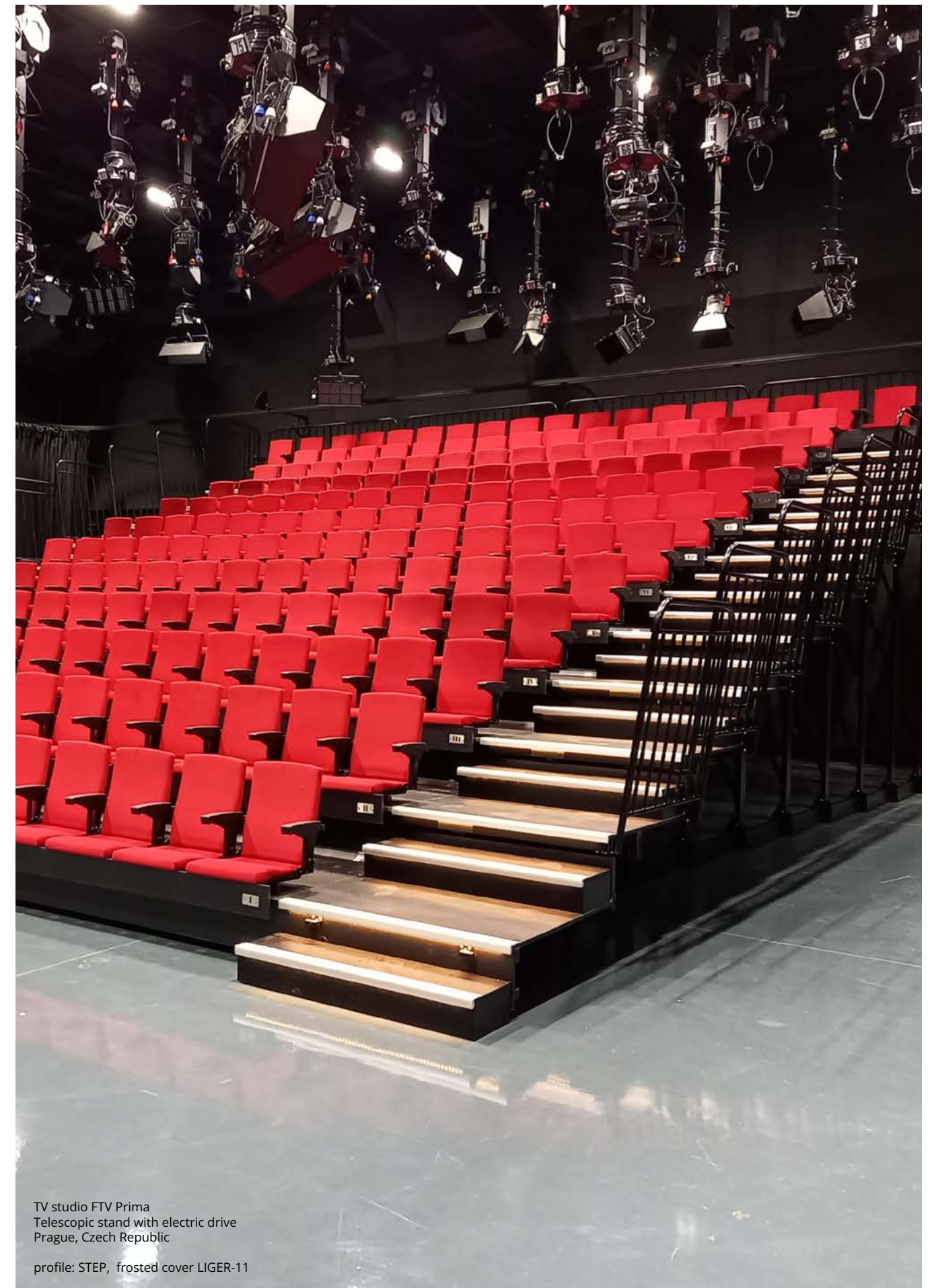
STEP, STEPUS, POR

Step and railing lighting



Oklahoma State Capitol
Oklahoma City, USA
Justin Miers Photography

profile: POR, frosted cover LIGER-11



TV studio FTV Prima
Telescopic stand with electric drive
Prague, Czech Republic

profile: STEP, frosted cover LIGER-11



The STEP profile is designed for mounting on the edge of stair treads. Its unique design allows for bidirectional lighting (up/down), creating a subtle glow effect that discreetly highlights the edge of the steps and illuminates the space while concealing the light source.

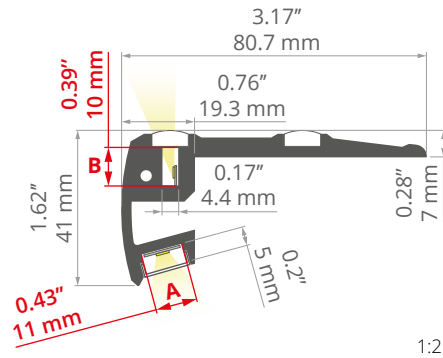
Made of anodized aluminum, the STEP profile guarantees high durability and resistance to damage. Thanks to the use of appropriate covers and seals, it achieves an IP67 rating, providing protection against moisture and dust.

In terms of safety, STEP luminaires are a low-voltage solution, equipped with silicone anti-slip cords, and frosted covers effectively reduce glare.

Material: aluminum
Profile length: **max. 3m**
Possible luminaire **IP: 67**
Maximum power of a single LED strip: **24 W/m**
LED A strip width: 11 mm
LED B strip width [mm]: 10 mm
Number of LED A strips (8 mm wide): 1

High mechanical resistance
Cover is cut to the length of the profile
Cable outlet from the bottom

[CONFIGURE FIXTURE](#)
[CHECK INSTALLATION](#)
[FILM STEP](#)



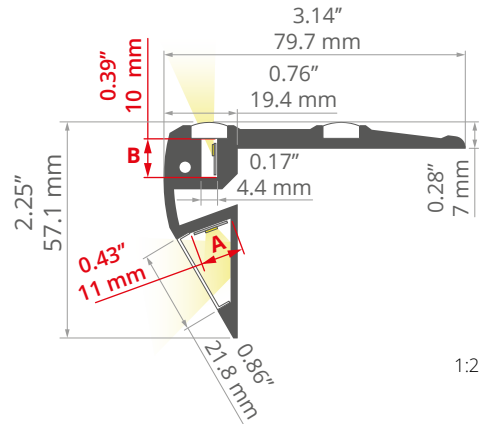
STEPUS is a luminaire designed for mounting on the edge of stair treads, emitting light in two directions (up and down). This lighting solution discreetly highlights the contour of the steps and illuminates the surrounding area while concealing the light source. It is made of high-quality, durable aluminum. The profile can be sealed to IP 67.

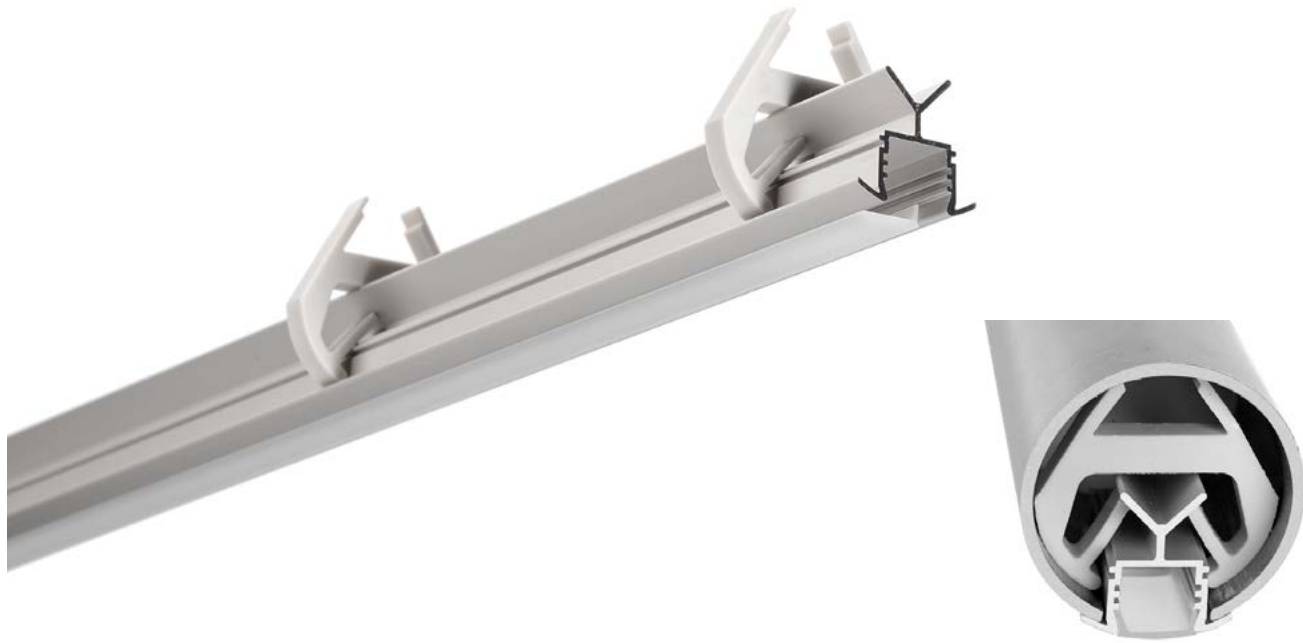
STEPUS luminaires are a safe, low-voltage solution, equipped with silicone anti-slip cords, and frosted covers effectively reduce glare. Furthermore, they comply with the American ADA standard, ensuring they can be safely used by people with various degrees of disability.

Material: aluminum
Profile length: **max. 3m**
Possible luminaire **IP: 67**
Maximum power of a single LED strip: **24 W/m**
LED A strip width: 11 mm
LED B strip width [mm]: 10 mm
Number of LED A strips (8 mm wide): 1

High mechanical resistance
Cover is cut to the length of the profile
Cable outlet from the bottom

[CONFIGURE FIXTURE](#)
[CHECK INSTALLATION](#)





The POR lighting fixture is a specialized solution that allows for the integration of light into the handrail, making it virtually invisible to the user when the light is off, yet highly functional when it is on.

Designed for installation inside a 42mm or 49mm diameter handrail, POR is compatible with new and existing stainless steel, acid-resistant, or aluminum balustrades. Installation is achieved using a click-in method using dedicated latches, leaving no visible fasteners.

The profile is available with an anodized finish, ensuring durability and weather resistance, while the option of sealing to IP67 allows for safe use in outdoor or high-humidity spaces.

Material: aluminum

Possible luminaire **IP: 67**

Maximum power of a single LED strip: **24 W/m**

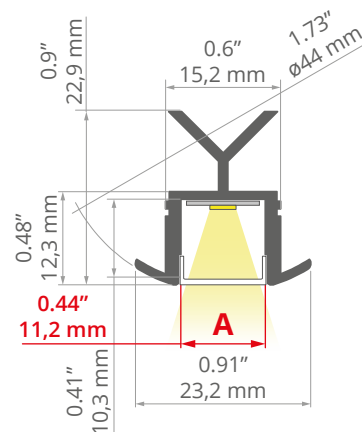
LED A strip width: 11.2 mm

Number of LED A strips (8 mm wide): 1

Easy „click“ installation

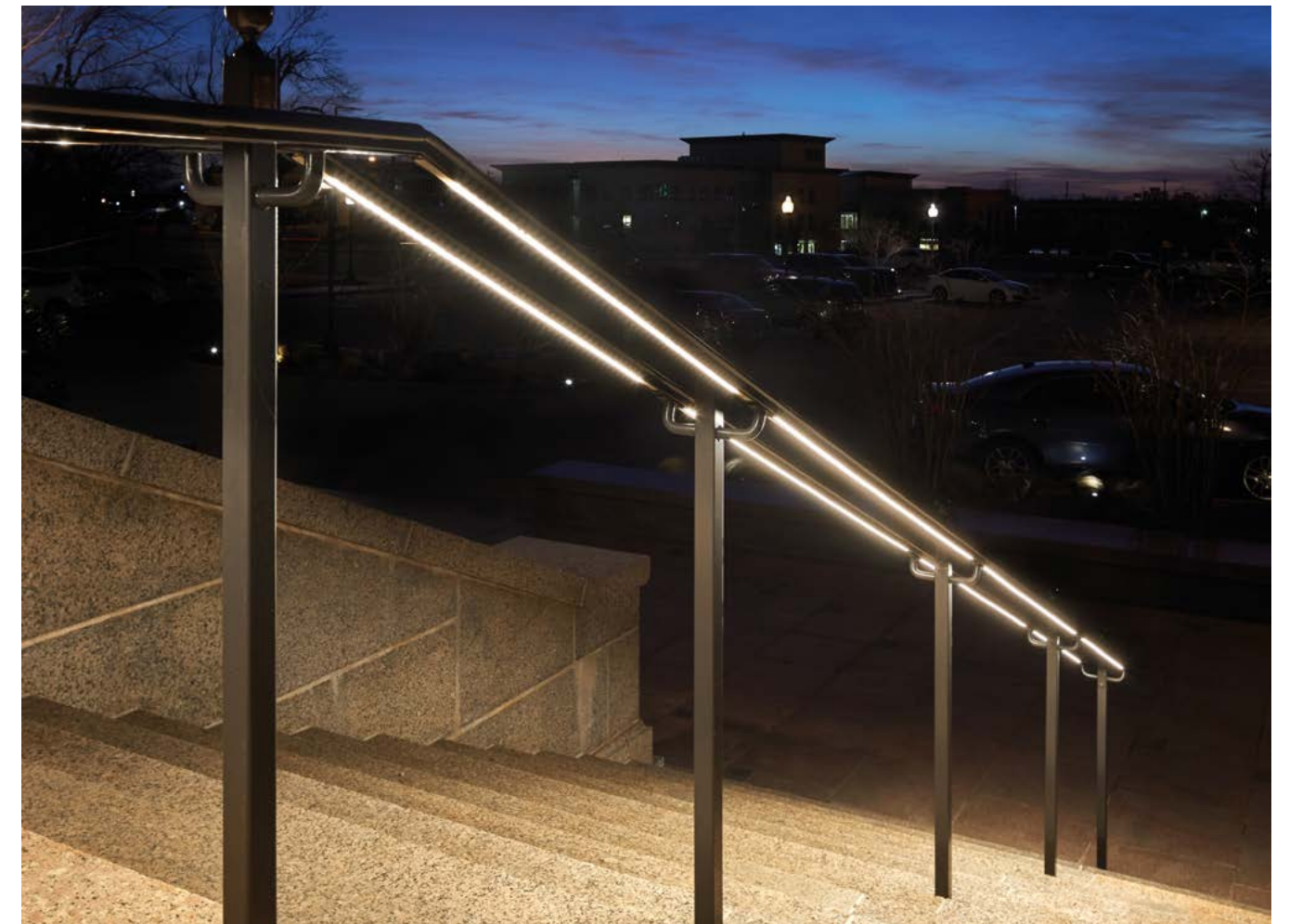
Cable exit through the end cap

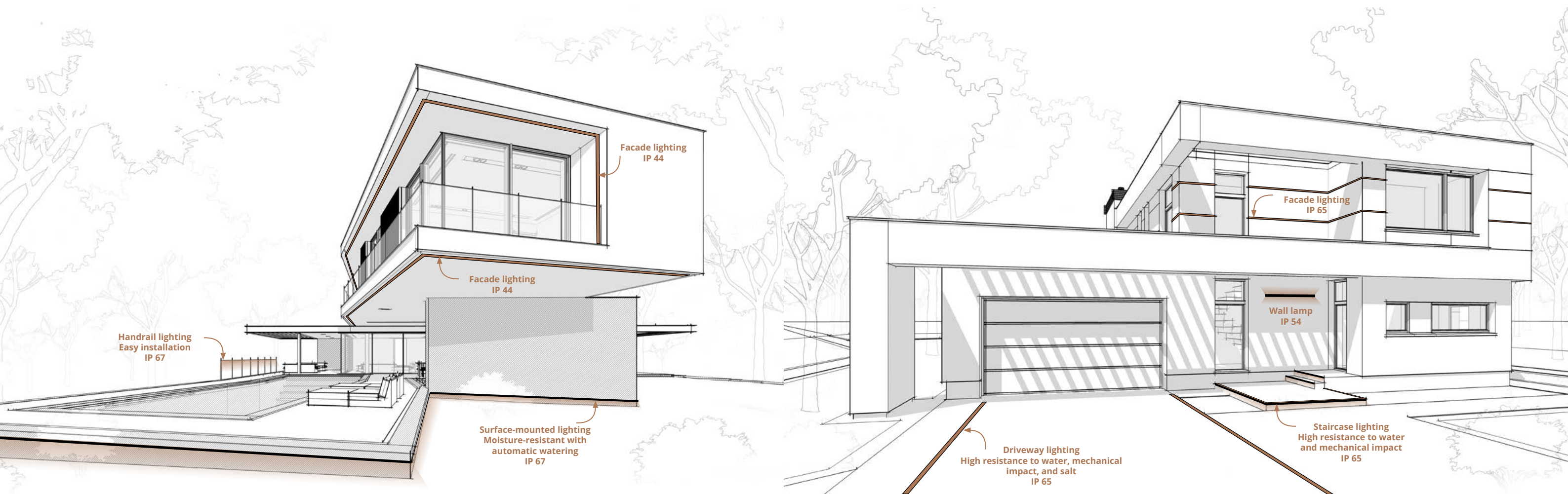
Cable exit from the bottom



Oklahoma State Capitol
Oklahoma City, USA
Justin Miers Photography

profile: POR, frosted cover LIGER-11





How to get a sealed lighting fixture

The IP rating is the basic indicator of a luminaire's protection against dust and water. For installation on outdoor stairs or in areas regularly exposed to rain, a minimum IP65 rating is required, providing complete protection against dust and water jets. In environments with high humidity or near water (e.g., garden paths near a swimming pool), a minimum IP67 rating is recommended, while luminaires placed directly in water, in ponds or fountains, must achieve IP68.

To ensure a high IP rating, use solidly constructed luminaires made of high-quality materials (e.g., corrosion-resistant anodized aluminum), equipped with sealed LED strips, waterproof power supplies, and accessories. These are essential to prevent water from entering the housing and damaging the luminaires.



Sealed LED strips
4-year warranty

Sealed profiles
IP65, IP67, IP68

Sealed accessories

KLUŚ offers LED strips with two sealing solutions: silicone sleeves or gel.

The silicone sleeve, available in 5K, 8K, and 14K versions, ensures quick and hassle-free installation, while also ensuring long-term durability and requires factory-certified IP65 sealing.

The gel LED strip offers flexibility: you can seal it yourself with a dedicated sealant or have it done by a factory. Both versions are covered by a 4-year warranty, ensuring long-term reliability and peace of mind.

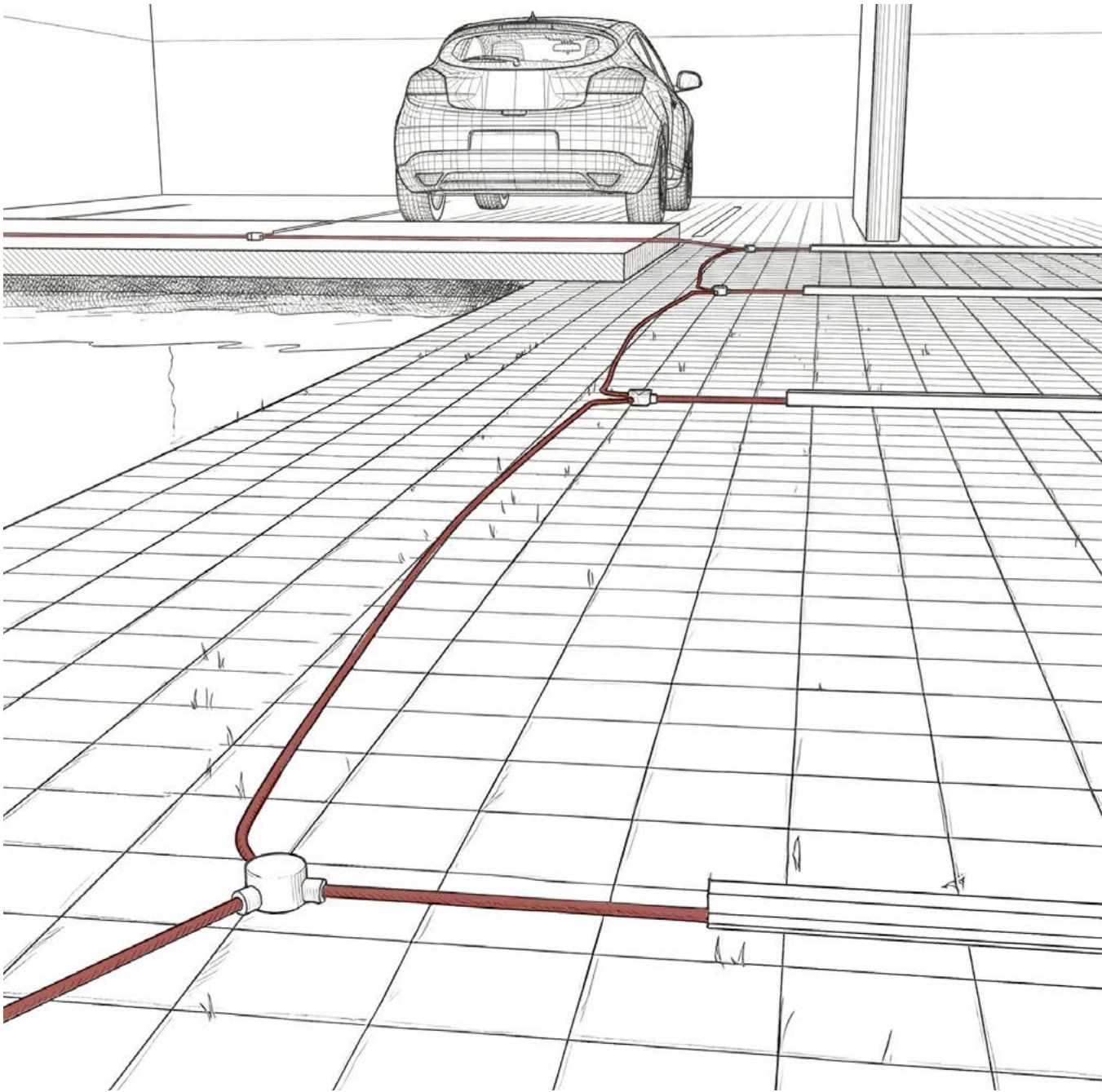
Most KLUŚ profiles can be configured into fully sealed luminaires with IP65, IP67, and in the case of the HR-MAX and HR-OPTI series, even IP68. These unique profiles are **designed for extreme conditions**: water immersion, exposure to salt and dust, and pressure resistance up to 2000 kg. Thanks to the integrated approach – where the profile, cover, and tape seal form a cohesive system – reliable, professional luminaires or lighting lines are achieved. The use of such solutions enables the safe use of LED lighting in rooms with high humidity, entrance areas, facades, and pedestrian walkways.

The sealing system is complemented by dedicated accessories: power supplies rated up to IP67, cable glands, cable glands, hermetic couplers up to IP68, and end caps and mounting elements designed for specific profiles and strips. These components ensure continuous sealing at critical installation points – from light line terminations to cable and power outlets. By precisely matching accessories to profiles and strips, the required IP level can be planned at the design stage, as needed. The result is luminaires that combine aesthetics with durability, maintaining sealing parameters for years of use.

Hermetic accessories for outdoor installations

Hermetic couplers and junction boxes are essential components for electrical installations requiring high levels of tightness and protection against moisture, dust, and other external factors. They are used in both outdoor and indoor installations, ensuring safe and reliable electrical connections.

The hermetic accessories offered by KLUŚ feature a high degree of tightness, up to IP 68, and are made of durable, weather-resistant materials.



Wire connector
Ref: C28240C02

Number of clamps: 3
Min. rated connection capacity [mm²]: 0.75 mm²
Max. rated connection capacity [mm²]: 0.75 mm²
Min. suitable cable diameter [mm]: 6 mm
Max. suitable cable diameter [mm]: 9 mm
IP protection class: 67
Height: 29 mm
Nominal voltage [V]: 24 V



Wire connector THB.200.E5E, 5 pin
Ref: C28157C07

Number of clamps: 5
Min. rated connection capacity [mm²]: 0.5 mm²
Max. rated connection capacity [mm²]: 1.5 mm²
Min. suitable cable diameter [mm]: 7.5 mm
Max. suitable cable diameter [mm]: 9.5 mm
IP protection class: 67
Rated current: 16 A
Height: 20 mm
Nominal voltage [V]: 250 V



Hermetic coupler THB.381, 2pin
Ref: C28125C07

Number of clamps: 2
Min. rated connection capacity [mm²]: 0.25 mm²
Max. rated connection capacity [mm²]: 1.5 mm²
Min. suitable cable diameter [mm]: 5.9 mm
Max. suitable cable diameter [mm]: 6.9 mm
IP protection class: 68
Rated current: 10 A
Length: 90 mm
Diameter [mm]: 14 mm
Nominal voltage [V]: 400 V



Hermetic coupler THB.391.A4A, 4 pin
Ref: C42268C10

Min. rated connection capacity [mm²]: 0.5 mm²
Max. rated connection capacity [mm²]: 4 mm²
Min. suitable cable diameter [mm]: 7 mm
Max. suitable cable diameter [mm]: 12 mm
IP protection class: 68
Rated current: 32 A
Length: 68 mm
Diameter [mm]: 23 mm
Nominal voltage [V]: 450 V



Hermetic coupler THB.391.A5A, 5 pin
Ref: C28156C07

Min. rated connection capacity [mm²]: 0.5 mm²
Max. rated connection capacity [mm²]: 1.5 mm²
Średnica zewnętrzna przewodu [mm]: 12 mm
IP protection class: 68
Rated current: 17.5 A



Hermetic coupler
Ref: C28239C02

Number of clamps: 2
Min. rated connection capacity [mm²]: 0.75 mm²
Max. rated connection capacity [mm²]: 0.75 mm²
Min. suitable cable diameter [mm]: 6 mm
Max. suitable cable diameter [mm]: 9 mm
IP protection class: 67
Length: 65 mm
Diameter [mm]: 21 mm
Nominal voltage [V]: 24 V



Gland M16x1,5
Ref: C42271C02

Cable opening diameter: 10 mm
IP protection class: 68
Length: 34 mm
Diameter [mm]: 21 mm



Angular gland M16x1,5-L90
Ref: C28158C02

IP protection class: 68
Height: 34 mm



Intelligent lighting control

Lighting management systems allow us to leverage not only the savings potential of LED technology but also the potential for lighting optimization through intelligent regulation, such as lighting duration and efficiency. By combining advanced technologies and deep expert knowledge, KLUŠ is able to deliver sustainable lighting solutions that generate energy cost savings, enhance user comfort, and support environmental responsibility.

Casambi

[CHECK THE CASAMBI CONTROL SYSTEM](#)

Casambi provides intelligent lighting control using powerful, intuitive apps and the most advanced technology on the market. It combines the reliability of DALI, the freedom of wireless connectivity, and the flexibility of automated control within a single ecosystem. The Casambi system gives lighting professionals, designers, and installers unparalleled design freedom and the ability to implement solutions for projects of any size.

Intelligent

The control system is integrated directly with the luminaires, enabling intelligent automation and intuitive configuration via the app.

Fast

No additional hardware—just luminaires, sensors, and switches, making installation simple, organized, and fast.

Easy

Launch, configure, and customize with the Casambi app. For projects with recurring functionality and highly automated spaces, use the Casambi Pro app.

Everywhere

The Casambi app has no limitations, such as industry type, project size, or geographic area.

Wlightbox Controllers

[CHECK CONTROLLERS](#)

One of the simplest control systems, integrated with lighting fixtures. It enables wireless color adjustment of RGB, RGBW, RGB+CCT, or white light using smartphones and tablets with µWiFi technology.

- No additional control modules, hubs, or central units required.
- Connection with access from anywhere in the world (internet access required).
- Ability to set a continuous dimming and brightening schedule.
- The controller can operate according to a preset schedule.
- Ability to control the device based on local sunrise and sunset times.



KLUŚ sp. z o.o.
Corporate Headquarter
Słoneczna 126 St,
05-506 Kolonia Lesznowola, Poland

www.KlusDesign.pl
www.KlusDesign.eu

Sales Department, Technical Support
info@klus.pl
architects@klus.pl

Orders
orders@klus.pl
+48 22 757 40 51

KLUŚ holds patents for its solutions in Europe and the United States.
We reserve the right to make changes to product ranges and modifications.

2026

