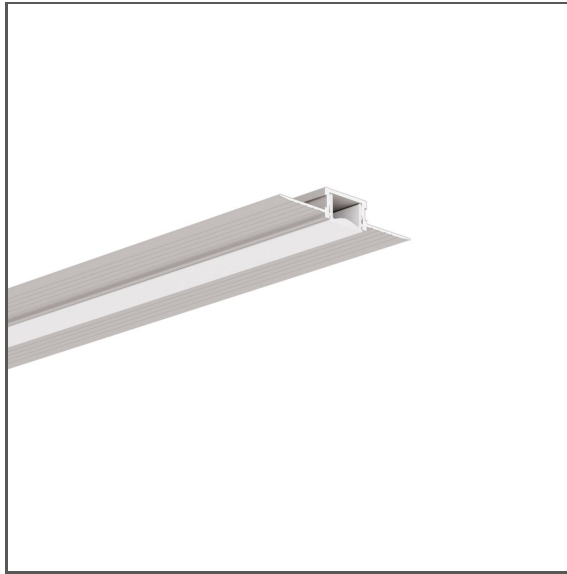


Profile HR-SLIM-KOZ

Ref. A00037



- LED profile that enables the transition of a light line from the floor to the wall and then to the ceiling, creating uniform illumination without visible diodes
- It is ideal for residential spaces, including dining rooms, bedrooms, living rooms, and bathrooms, allowing users to enhance interiors with the glow of light
- Mounting to drywall
- Sealing to IP65 is possible with a dedicated cover that is very easy to install – click-in system
- No dimming effect of the light line towards corners or at profile connections
- IP67 sealing can be achieved using silicone sealing

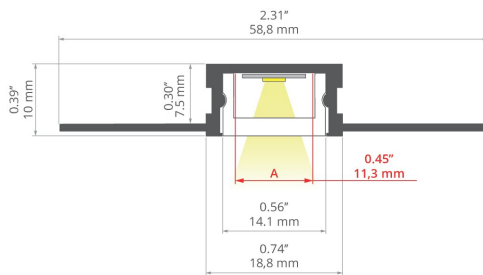
APPLICATION

- decorative and signal lighting

MOUNTING

- in drywall, with mounting adhesive

TECHNICAL DRAWING



TECHNICAL SPECIFICATIONS

Material	aluminum
Color	silver non anodized
Possible fixture IP	20, 65, 67
Possible fixture shapes	linear, round, rectangular, polygonal
Profile cross-section	rectangular
Width	58.8 mm
Height	10 mm
LED gluing width A	11 mm
Width of the glow	15 mm
Impact protection IK08	yes
Possibility of obtaining a line of light	yes
Possibility of bending	yes
Radius of the light arc	yes
Inward	600 mm
Outdoor	1000 mm
Mounting to drywall	yes
To cover with plaster	yes

Length	Ref
1000 mm	A00037N_1
2005 mm	A00037N_2
3010 mm	A00037N_3

Standard lengths of KLUŚ profiles and covers: 1000 mm (tolerance ± 1.5 mm) and 2005 mm / 3010 mm (tolerance + 5 mm); for selected covers: 6050 mm, 10050 mm (tolerance + 5 mm)

Profile HR-SLIM-KOZ

Ref. A00037

Wire out back of extrusion	yes
Possibility of bending in the light plane	yes

SAMPLE PROJECTS






RELATED PROFILES






HR-SLIM
A00015

RELATED ACCESSORIES > COVERS

NAME	MATERIAL	MATERIAL TRANSMITTANCE	COLOR	REF.
Cover HR-IP-15 	 PC	41 %	frosted	B17154F
Cover HR-15 	PC	41 %	frosted	B17153F

RELATED ACCESSORIES > END CAPS

NAME	MATERIAL	COLOR	REF.
End cap HR-SLIM 	 stainless steel	 silver	C28302C01

RELATED ACCESSORIES > RELATED LED > WHITE MONO

Name	Stopień ochrony IP	Moc	Ref.
KWP-GHD-0480-24 NEW	65	4.8 W/m	KWP-GHD-0480-24
KWP-GHD-0960-24 NEW	65	9.6 W/m	KWP-GHD-0960-24
KWP-GHD-1440-24 NEW	65	14.4 W/m	KWP-GHD-1440-24
K-0480-24	20	4.8 W/m	K-0480-24
K-0960-24	20	9.6 W/m	K-0960-24
K-1440-24	20	14.4 W/m	K-1440-24
K-HD-0480-24	20	4.8 W/m	K-HD-0480-24
K-HD-0960-24	20	9.6 W/m	K-HD-0960-24
K-HD-1440-24	20	14.4 W/m	K-HD-1440-24

RELATED ACCESSORIES > RELATED LED > CRI 95+

Name	Stopień ochrony IP	Moc	Ref.
K-CR-1440-24	20	14.4 W/m	K-CR-1440-24
K-CR-0480-24	20	4.8 W/m	K-CR-0480-24
K-CR-0960-24	20	9.6 W/m	K-CR-0960-24

RELATED ACCESSORIES > RELATED LED > RGB / RGB-W / RGB-CCT

Name	Stopień ochrony IP	Moc	Ref.
K-RGB-0700-24	20	7 W/m	K-RGB-0700-24V
K-RGB-1200-24	20	12 W/m	K-RGB-1200-24
K-RGBW-1530-24	20	15.3 W/m	K-RGBW-1530-24
KWP-GRGBW-1530-24	65	15.3 W/m	KWP-GRGBW-1530-24